

Discrepancy Index Case E

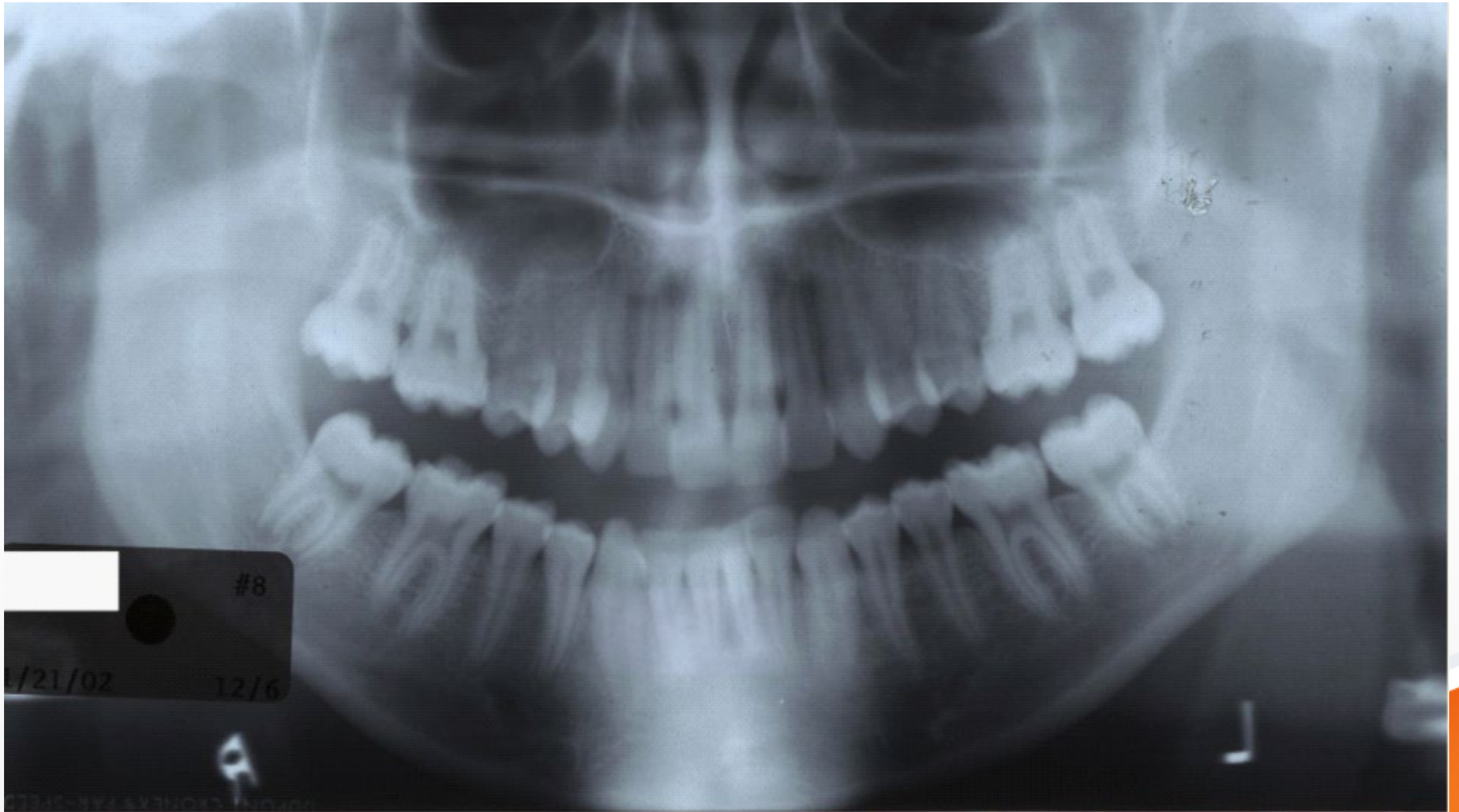


The highest commitment to excellence.

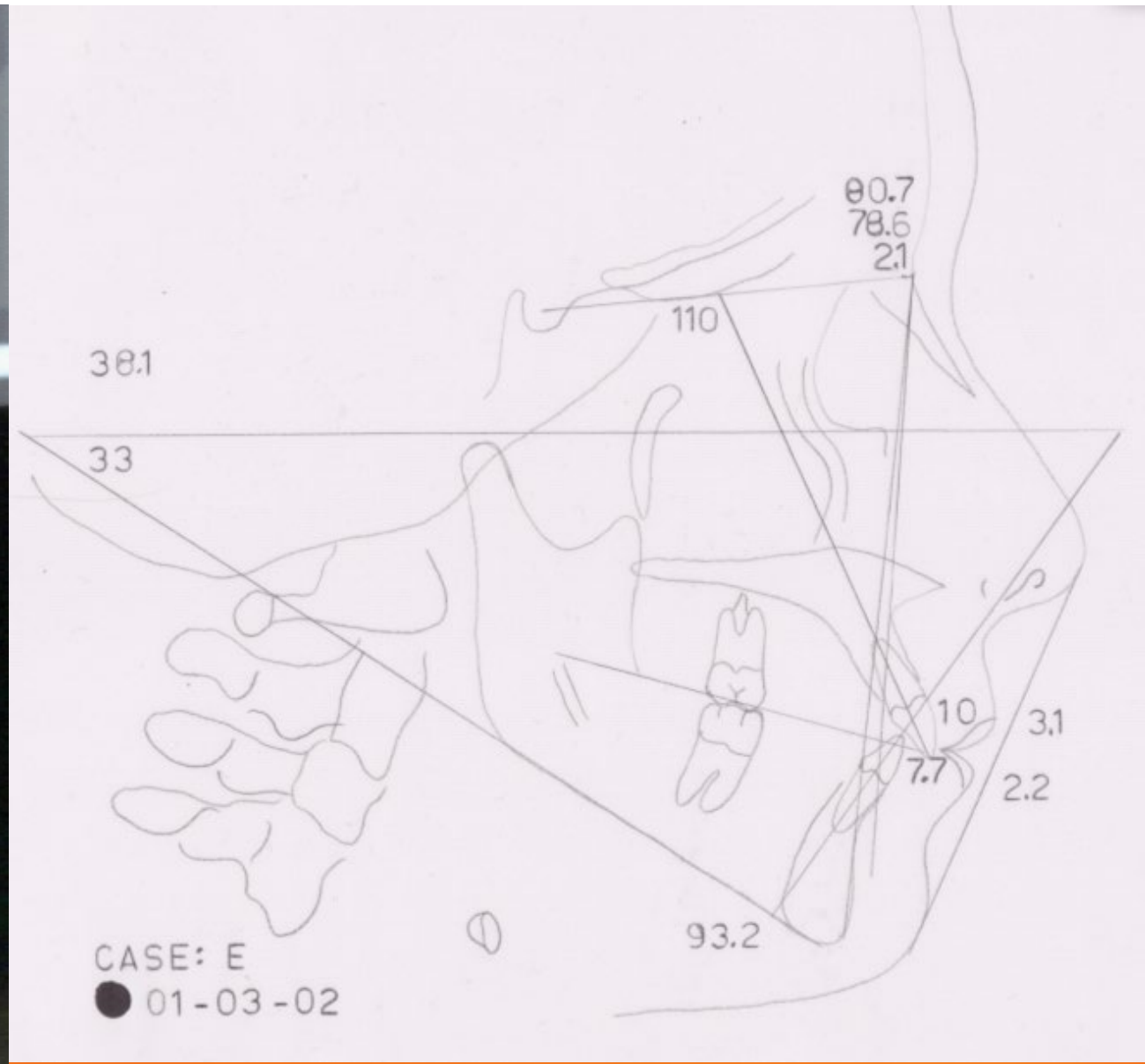
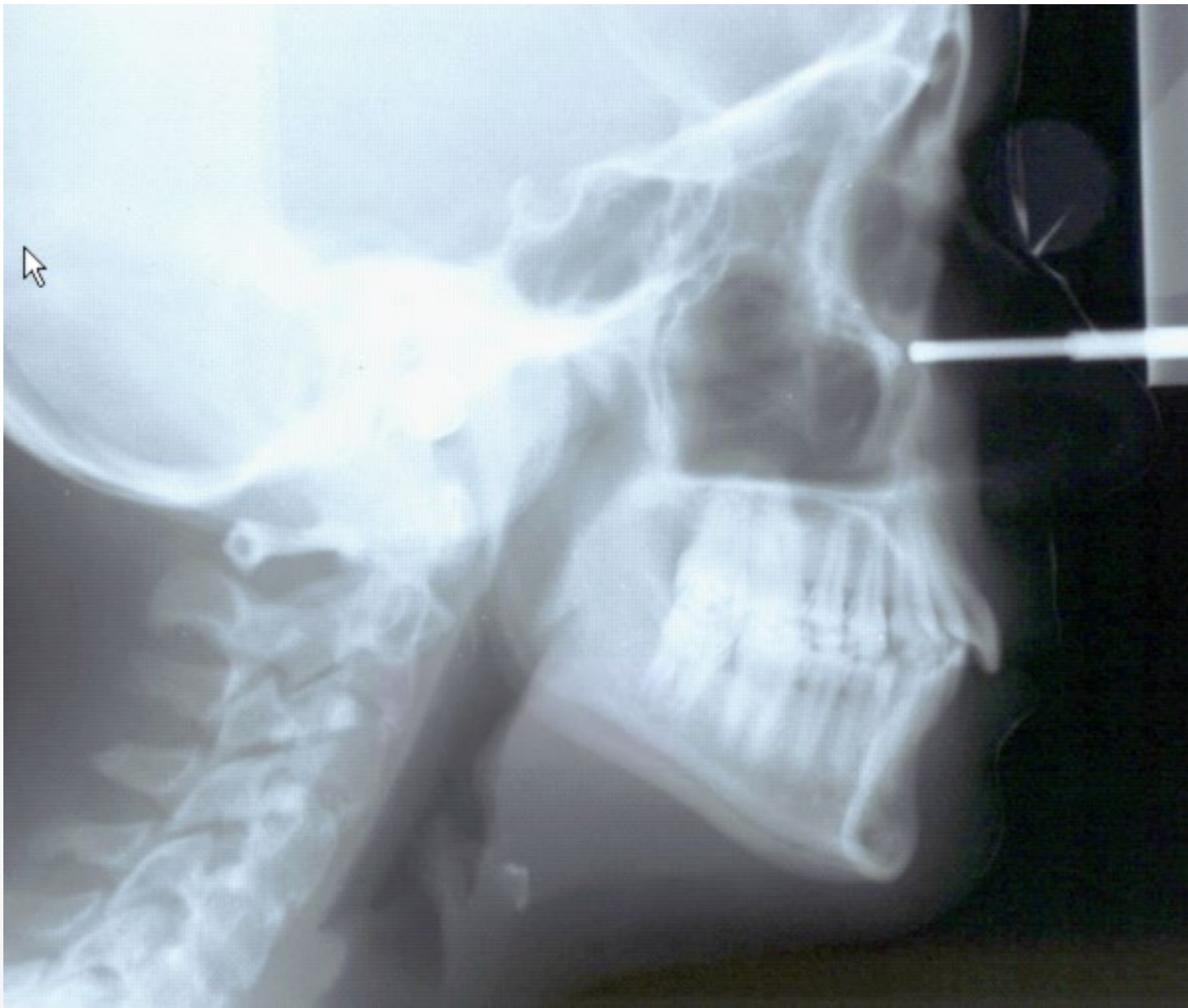
Case E



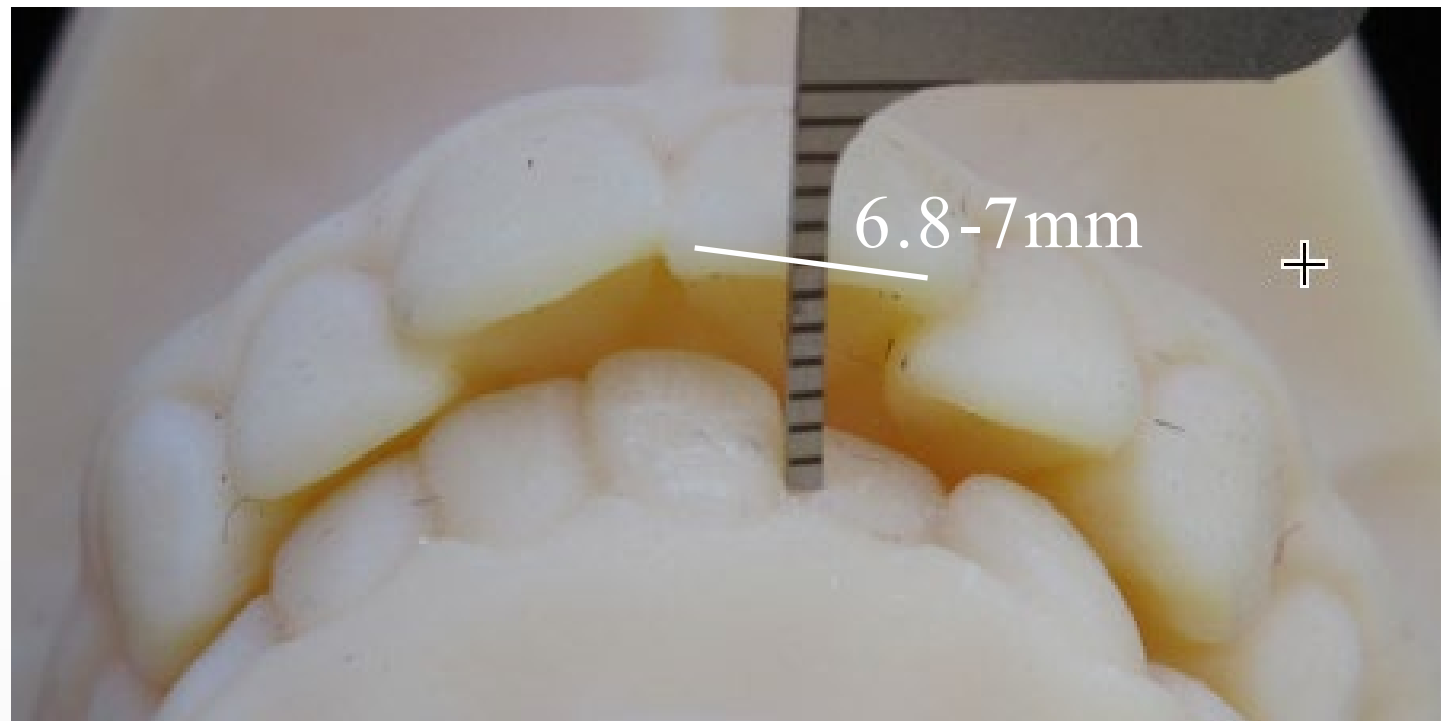
Case E



Case E



Overjet



OVERJET

≥ 0 to < 1 mm (edge-to-edge)	= 1 pt
≥ 1 to ≤ 3 mm	= 0 pts
> 3 to ≤ 5 mm	= 2 pts
> 5 to ≤ 7 mm	= 3 pts
> 7 to ≤ 9 mm	= 4 pts
> 9 mm	= 5 pts

Negative Overjet (x-bite):

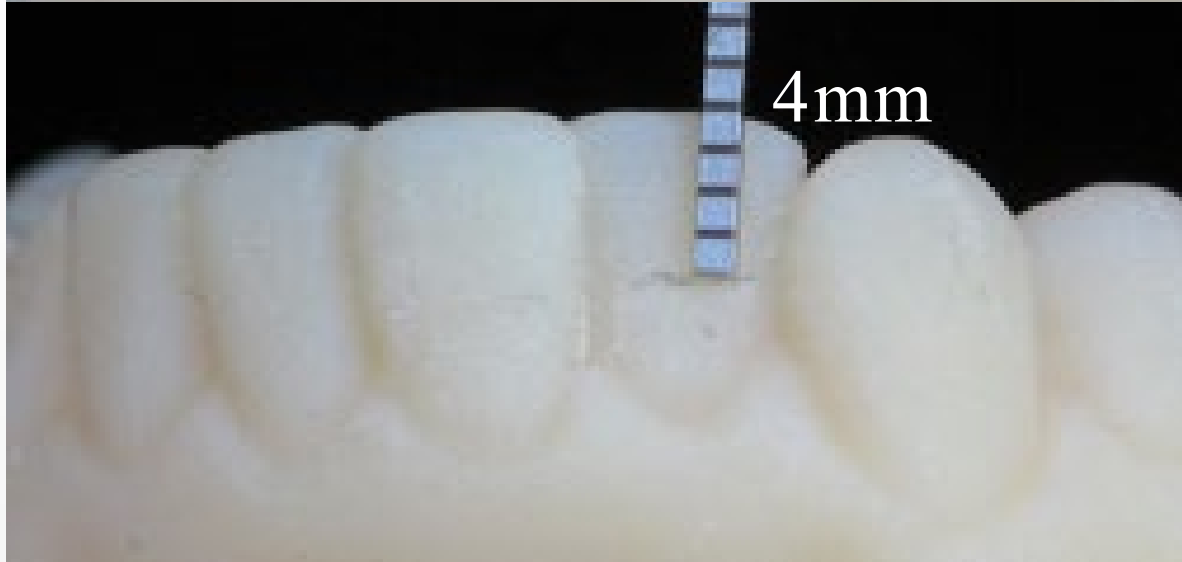
1 pt per mm per tooth

= ___ pts

Total

3

Overbite



OVERBITE

> 1 to \leq 3 mm

> 3 to \leq 5 mm

> 5 to \leq 7 mm

Impinging (100%)

= 0 pts

= 2 pts

= 3 pts

= 5 pts

Total

2

Openbite



ANTERIOR OPEN BITE

0 mm (edge-to-edge), 1 pt per tooth = ____ pts
then 1 pt per mm per tooth = ____ pts

Total

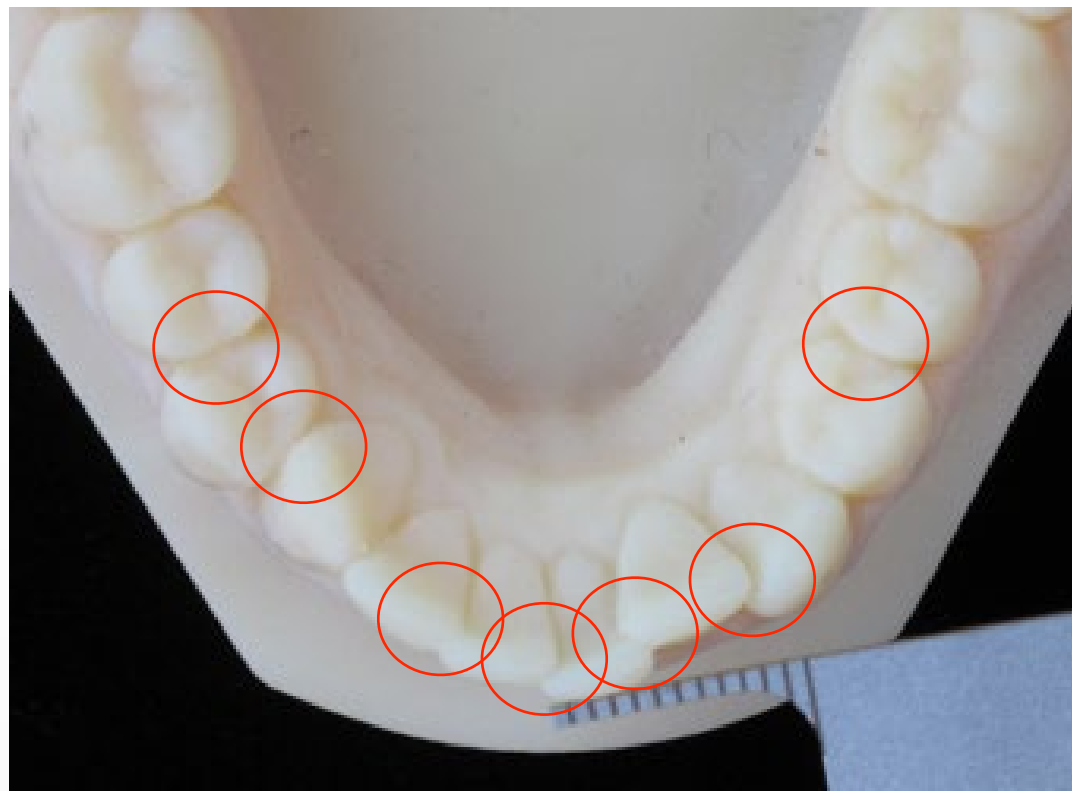


LATERAL OPEN BITE

≥ 0.5 mm, 2 pts per mm per tooth

Total

Crowding



CROWDING (only one arch)

≥ 0 to ≤ 1 mm	= 0 pts
> 1 to ≤ 3 mm	= 1 pts
> 3 to ≤ 5 mm	= 2 pts
> 5 to ≤ 7 mm	= 4 pts
> 7 mm	= 7 pts

Total



Crowding



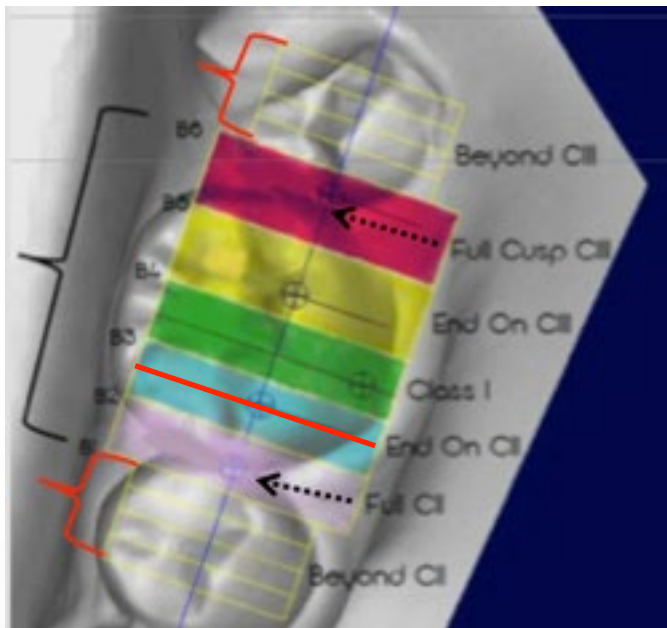
CROWDING (only one arch)

≥ 0 to ≤ 1 mm		= 0 pts
> 1 to ≤ 3 mm		= 1 pts
> 3 to ≤ 5 mm	4.7mm	= 2 pts
> 5 to ≤ 7 mm		= 4 pts
> 7 mm		= 7 pts

Total

2

Occlusal Relationship



OCCLUSAL RELATIONSHIP

Class I to End On	= 0 pts	
End-to-End Class II or III	= 2 pts per side	___ pts
Full Class II or III	= 4 pts per side	___ pts
Beyond Class II or III	= 1 pt per mm additional	___ pts
Total		2



Posterior Crossbite



LINGUAL POSTERIOR X-BITE

> 0 mm, 1 pt per tooth

Total

3

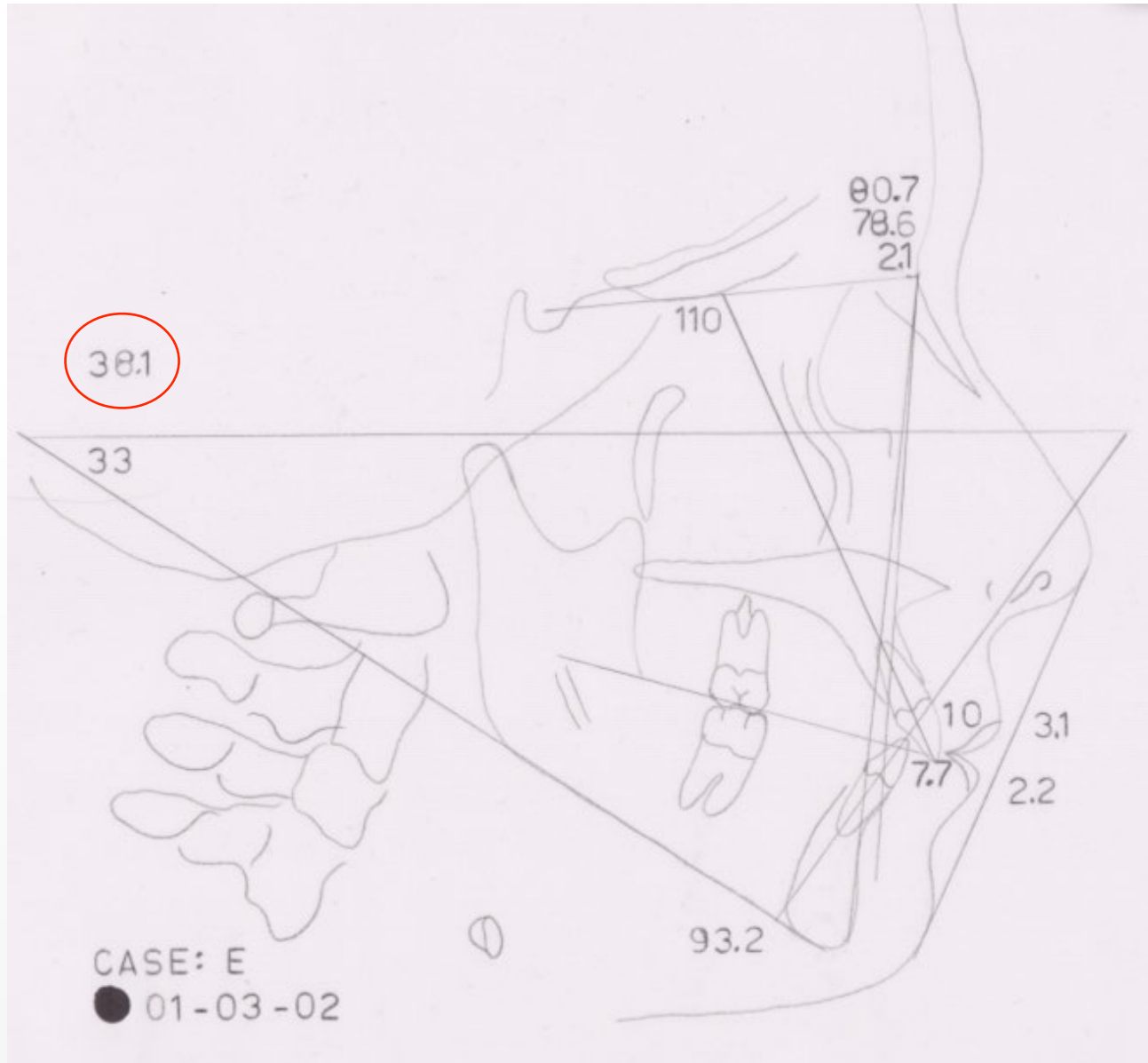
BUCCAL POSTERIOR X-BITE

> 0 mm, 2 pts per tooth

Total

0

Cephalometrics



CEPHALOMETRICS (See Instructions)

ANB $\geq 6^\circ$ or $\leq -2^\circ$ @4pts = ___
 Each full degree $> 6^\circ$ ___x 1 pt = ___
 Each full degree $< -2^\circ$ ___x 1 pt = ___

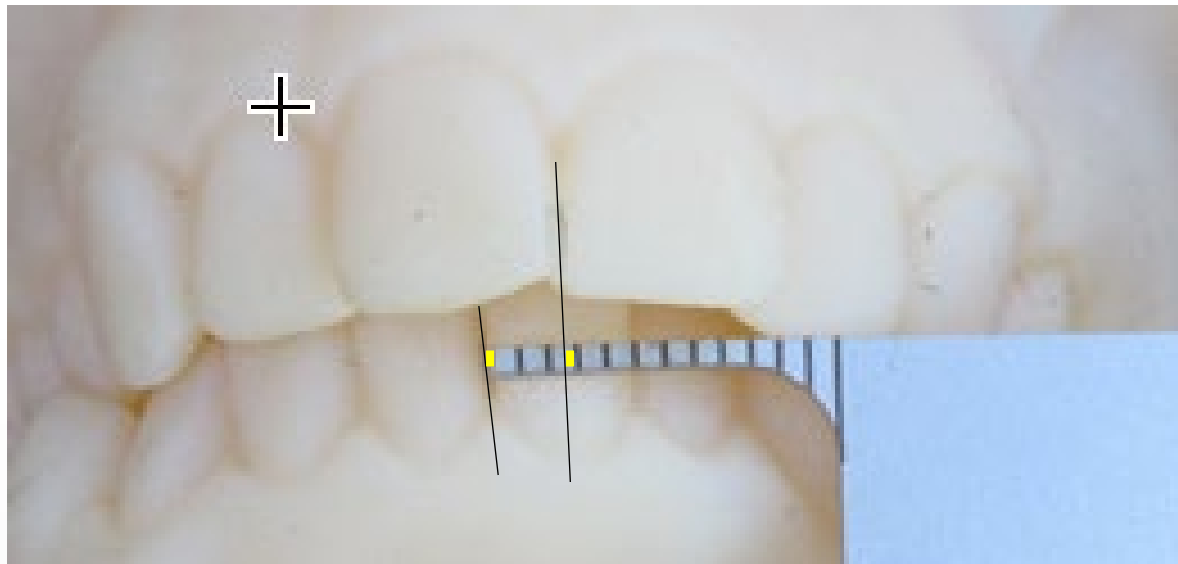
SN-MP $\geq 38^\circ$ @2pts = 2
 Each full degree $> 38^\circ$ ___x 2 pts = ___

$\leq 26^\circ$ @1pt = ___
 Each full degree $< 26^\circ$ ___x 1 pt = ___

\bar{I} to MP $\geq 99^\circ$ @1pt = ___
 Each full degree $> 99^\circ$ ___x 1 pt = ___

Total 2

Other - Midline



Where you measure it makes a difference.

OTHER (See Instructions)

Supernumerary teeth	___x 1 pt = ___
Ankylosis of permanent teeth	___x 2 pts = ___
Anomalous morphology	___x 2 pts = ___
Impaction (except 3rd molars)	___x 2 pts = ___
Midline discrepancy (≥ 3 mm)	@ 2 pts = <u>2</u>
Missing teeth (except 3rd molars)	___x 1 pt = ___
Missing teeth, congenital	___x 2 pts = ___
Spacing (4 or more, per arch)	___x 2 pts = ___
Spacing (mx cent diastema ≥ 2 mm)	@ 2 pts = ___
Tooth transposition	___x 2 pts = ___
Skeletal asymmetry(nonsurgical tx)	@ 3 pts = ___

Other - Anomalous Morphology



LL2 measures 6 mm.

It is 0.6mm+ larger than the LR2.

It's not unreasonable to score it.

OTHER (See Instructions)

Supernumerary teeth	___x 1 pt = ___
Ankylosis of permanent teeth	___x 2 pts = ___
Anomalous morphology	<u>1</u> x 2 pts = <u>?</u>
Impaction (except 3rd molars)	___x 2 pts = ___
Midline discrepancy (≥ 3 mm)	@ 2 pts = ___
Missing teeth (except 3rd molars)	___x 1 pt = ___
Missing teeth, congenital	___x 2 pts = ___
Spacing (4 or more, per arch)	___x 2 pts = ___
Spacing (mx cent diastema ≥ 2 mm)	@ 2 pts = ___
Tooth transposition	___x 2 pts = ___
Skeletal asymmetry(nonsurgical tx)	@ 3 pts = ___

TOTAL D.I. SCORE

16 -18

For mm measures, round up to the next full mm.
Examiners will verify measurements in each category.

OVERJET

- ≥ 0 to < 1 mm (edge-to-edge) = 1 pt
- ≥ 1 to ≤ 3 mm = 0 pts
- > 3 to ≤ 5 mm = 2 pts
- > 5 to ≤ 7 mm = 3 pts
- > 7 to ≤ 9 mm = 4 pts
- > 9 mm = 5 pts
- Negative Overjet (x-bite):
1 pt per mm per tooth = ___ pts

Total 3

OVERBITE

- > 1 to ≤ 3 mm = 0 pts
- > 3 to ≤ 5 mm = 2 pts
- > 5 to ≤ 7 mm = 3 pts
- Impinging (100%) = 5 pts

Total 2

ANTERIOR OPEN BITE

- 0 mm (edge-to-edge), 1 pt per tooth = ___ pts
- then 1 pt per mm per tooth = ___ pts

Total 0

LATERAL OPEN BITE

- ≥ 0.5 mm, 2 pts per mm per tooth

Total 0

CROWDING (only one arch)

- ≥ 0 to ≤ 1 mm = 0 pts
- > 1 to ≤ 3 mm = 1 pts
- > 3 to ≤ 5 mm = 2 pts
- > 5 to ≤ 7 mm = 4 pts
- > 7 mm = 7 pts

Total 2

OCCUSAL RELATIONSHIP

- Class I to End On = 0 pts
- End-to-End Class II or III = 2 pts per side ___ pts
- Full Class II or III = 4 pts per side ___ pts
- Beyond Class II or III = 1 pt per mm additional ___ pts

Total 2

LINGUAL POSTERIOR X-BITE

- > 0 mm, 1 pt per tooth

Total 3

BUCCAL POSTERIOR X-BITE

- > 0 mm, 2 pts per tooth

Total 0

CEPHALOMETRICS (See Instructions)

- ANB ≥ 6° or ≤ -2° @4pts = ___
- Each full degree > 6° ___ x 1 pt = ___
- Each full degree < -2° ___ x 1 pt = ___

SN-MP

- ≥ 38° @2pts = 2
- Each full degree > 38° ___ x 2 pts = ___
- ≤ 26° @1pt = ___
- Each full degree < 26° ___ x 1 pt = ___

- I to MP ≥ 99° @1pt = ___
 - Each full degree > 99° ___ x 1 pt = ___
- Total 2

OTHER (See Instructions)

- Supernumerary teeth ___ x 1 pt = ___
- Ankylosis of permanent teeth ___ x 2 pts = ___
- Anomalous morphology LL2 ___ x 2 pts = ?
- Impaction (except 3rd molars) ___ x 2 pts = ___
- Midline discrepancy (≥ 3 mm) @ 2 pts = 2
- Missing teeth (except 3rd molars) ___ x 1 pt = ___
- Missing teeth, congenital ___ x 2 pts = ___
- Spacing (4 or more, per arch) ___ x 2 pts = ___
- Spacing (max cent diastema ≥ 2 mm) @ 2 pts = ___
- Tooth transposition ___ x 2 pts = ___
- Skeletal asymmetry(nonsurgical tx) @ 3 pts = ___
- Addl. treatment complexities ___ x 2 pts = ___

Identify:

Total Other 2